

# PRODUCT CATALOG

YEAR 2025



**STAINLESS STEEL FITTINGS PARTS**

# TABLE OF CONTENT



PAGE 3-4

## BALL VALVE

We produce ball valve and mini ball valve from 1/2" than 2" product.



PAGE 5-10

## FITTINGS

We have stainless steel fittings parts include elbow, TEE, check valves, HEX bushing, HEX nipple, full coupling etc.



PAGE 11-12

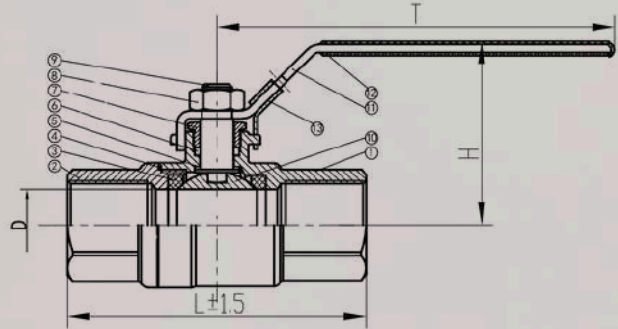
## OTHER

We produce a few stainless steel parts as an AISI304-AISI316 for marine and another industry

# BALL VALVE



Ball valves are durable, performing well after many cycles, and reliable, closing securely even after long periods of disuse. These qualities make them an excellent choice for shutoff and control applications

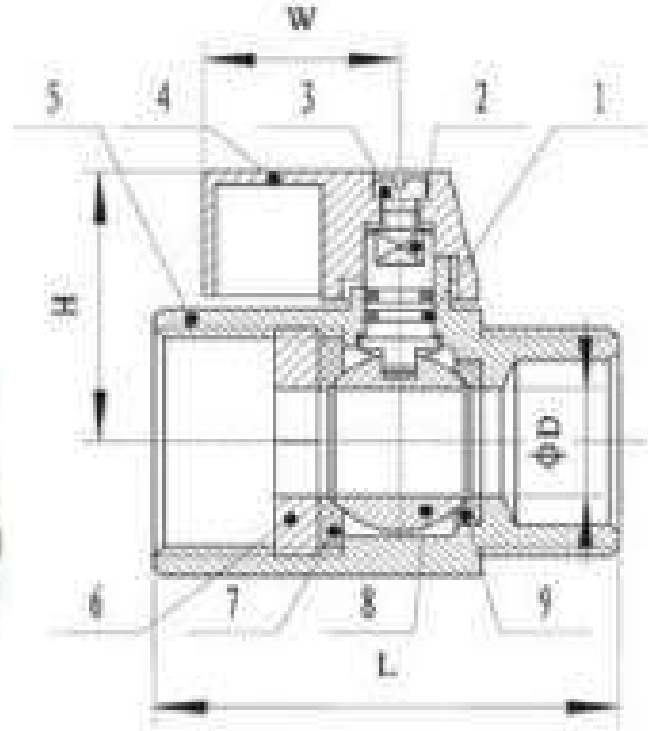


**2PC LIGHT BODY BALL VALVES DIN3202-M3**

SIZE	1/2"	3/4"	1"	1¼"	1½"	2"
D	15.0	18.0	24.0	32.0	35.0	44.0
L±1.5	75.0	80.0	90.0	110.0	120.0	140.0
H	58.0	64.0	70.0	76.0	84.0	89.5
T	99.0	104.0	111.0	141.0	141.0	160.0
KG	0.225	0.330	0.445	0.770	0.940	1.300

NO.	PART NAME	QTY	MATERIAL
1	BODY	1	CF8/CF8M
2	CAP	1	CF8/CF8M
3	SEAT	2	PTFE/RPTFE
4	JOINT GASKET	1	PTFE/RPTFE
5	THRUST WASHER	1	PTFE/RPTFE
6	PACKING	1	PTFE/RPTFE
7	GLAND	1	SS304
8	NUT	1	SS304
9	STEM	1	S304/S316
10	BALL	1	S304/S316
11	HANDLE	1	S201
12	HANDLE COVER	1	PVC
13	LOCK	1	S201

# MINI BALL VALVE



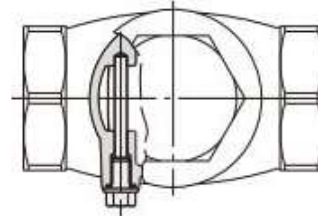
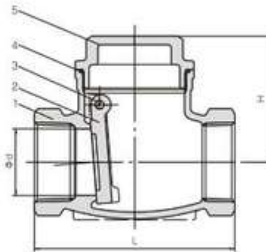
### MINI BALL VALVES M/F

SIZE ITEM	1/8"	1/4"	3/8"	1/2"	3/4"	1"
D	7.0	7.0	7.0	9.2	12.5	15.0
H	26.5	26.5	26.5	28.3	31.5	34.0
W	22.8	22.8	22.8	22.8	22.8	22.8
L	40.0	40.0	40.0	46.0	54.0	65.0

ITEM	DESIGNATION	MATERIAL
1	O-RING	NBR
2	STEM	SUS304
3	BOLT	SUS304
4	LEVER	ALUMINUM ALLOY/CF8
5	BODY	CF8/CF8M
6	CAP	CF8/CF8M
7	A BALL SEAT(A)	RPTFE
8	BALL	CF8/CF8M
9	B BALL SEAT(B)	RPTFE

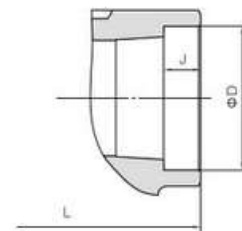
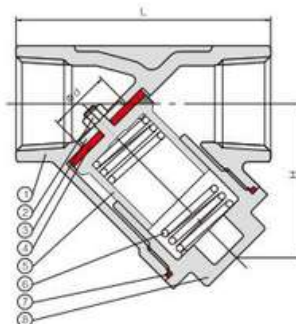


# FITTINGS



## SWING CHECK VALVES

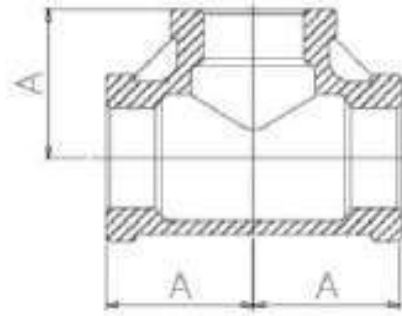
SIZE	1/2"	3/4"	1"	1¼"	1½"	2"	2½"	3"	4"
B	25.0	31.0	37.5	46.0	52.0	64.0	83.0	97.0	124.0
L	62.0	71.5	84.0	98.0	111.0	128.0	165.0	190.0	237.0
H	41.0	46.0	50.0	58.0	63.0	70.0	90.0	100.0	118.0
NO.	PART NAME		MATERIAL						
1	BODY		CF8						
2	DISC		CF8						
3	PIN		304						
4	SEALING RING		PTFE						
5	BONNET		CF8						



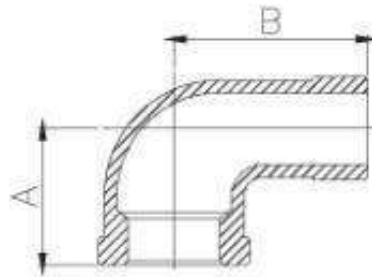
## Y TYPE THREADED STRAINER

SIZE	1/2"	3/4"	1"	1¼"	1½"	2"	2½"	3"	4"
L	59.0	75.0	83.0	99.0	105.0	123.0	163.0	190.0	238.0
H	40.0	50.0	58.0	65.0	78.0	96.0	115.0	140.0	180.0
B	24.0	31.0	37.0	46.0	52.0	64.0	81.0	95.0	121.0
NO.	PART NAME		MATERIAL						
1	VALVE BODY		CF8						
2	FILTER SCREEN		304						
3	GASKET		PTFE						
4	BONNET		CF8						

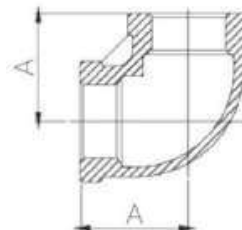
# FITTINGS



TEE													
Standard	SIZE	1/8"	1/4"	3/8"	1/2"	3/4"	1"	1 1/4"	1 1/2"	2"	2 1/2"	3"	4"
ISO4144	A	17.0	19.0	23.0	27.0	32.0	38.0	45.0	48.0	57.0	69.0	78.0	96.0



Street Elbow 90°													
Standard	SIZE	1/8"	1/4"	3/8"	1/2"	3/4"	1"	1 1/4"	1 1/2"	2"	2 1/2"	3"	4"
ISO4144	A	17.0	19.0	23.0	27.0	32.0	38.0	45.0	48.0	57.0	69.0	78.0	97.0
	B	26.0	28.0	30.0	36.0	40.0	47.0	55.0	57.0	70.0	83.0	94.0	115.0



Elbow 90°													
Standard	SIZE	1/8"	1/4"	3/8"	1/2"	3/4"	1"	1 1/4"	1 1/2"	2"	2 1/2"	3"	4"
ISO4144	A	17.0	19.0	23.0	27.0	32.0	38.0	45.0	48.0	57.0	69.0	78.0	96.0

# FITTINGS



HEX BUSHING



HEX PLUG / HEX CUP



HEX NIPPEL



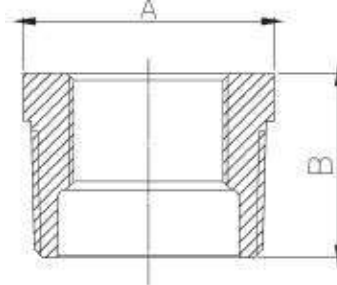
HOSE NIPPLE



THRU HULL

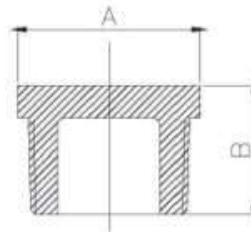


# FITTINGS



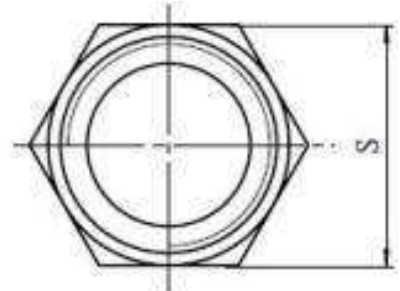
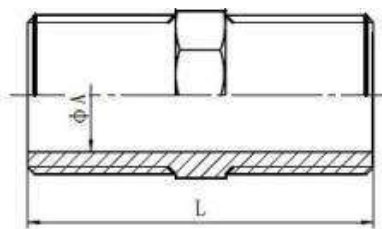
### HEX BUSHING

Standard	SIZE	1/4"	3/8"		1/2"			3/4"				1"	
		1/8"	1/8"	1/4"	1/8"	1/4"	3/8"	1/8"	1/4"	3/8"	1/2"	1/4"	3/8"
ISO4144	A	14.0	18.0	18.0	22.0	22.0	22.0	27.5	27.5	27.5	27.5	34.5	34.5
	B	16.0	16.5	16.5	20.0	20.0	20.0	21.0	21.0	21.0	21.0	24.5	24.5



### HEX PLUG

Standard	SIZE	1/8"	1/4"	3/8"	1/2"	3/4"	1"	1 1/4"	1 1/2"	2"	2 1/2"	3"	4"
ISO4144	A	Hex				Oct				Dec			
		11.0	15.0	18.0	22.0	28.0	35.0	43.5	49.5	62.0	77.5	90.5	117.0
	B	12.0	14.5	16.0	19.5	21.0	24.0	27.0	27.0	32.0	34.0	37.5	44.0

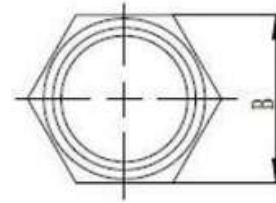
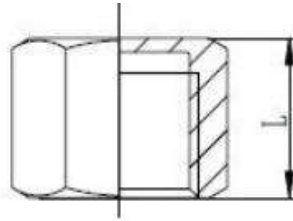


### HEX NIPPLE

Standard	SIZE	1/8"	1/4"	3/8"	1/2"	3/4"	1"	1 1/4"	1 1/2"	2"	2 1/2"	3"	4"
ISO4144	L	20.0	25.0	27.0	34.0	36.5	42.0	47.5	47.5	57.0	61.0	67.5	80.0
	S	11.0	15.0	18.0	22.0	28.0	35.0	43.5	49.5	62.0	77.5	90.5	117.0
	Ø A	5.5	8.0	11.5	15.0	20.5	26.0	34.5	40.0	51.0	65.5	77.5	101.5

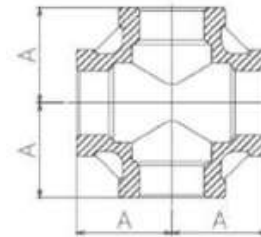


# FITTINGS



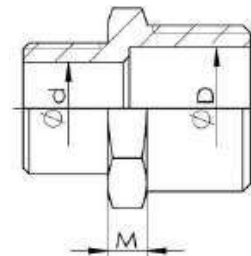
## HEX CAP

Standard	SIZE	1/8"	1/4"	3/8"	1/2"	3/4"	1"	1 1/4"	1 1/2"	2"	2 1/2"	3"	4"
ISO4144	B	13.5	17.0	20.5	25.0	31.0	38.0	47.0	53.0	66.0	82.0	95.5	121.5
		13.5	17.0	20.5	25.0	31.0	38.0	47.0	53.0	66.0	82.0	95.5	121.5
	L	13.5	17.0	17.5	21.0	22.5	26.0	29.0	29.0	33.5	38.5	42.0	48.5



## CROSS

Standard	SIZE	1/8"	1/4"	3/8"	1/2"	3/4"	1"	1 1/4"	1 1/2"	2"	2 1/2"	3"	4"
ISO4144	A	17.0	19.0	23.0	27.0	32.0	38.0	45.0	48.0	57.0	69.0	78.0	96.0



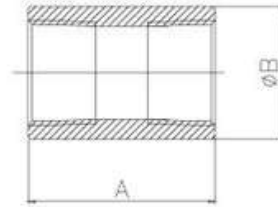
## REDUCER HEX NIPPLE

Standard	SIZE	1/4"	3/8"		1/2"			3/4"				1"	
		1/8"	1/8"	1/4"	1/8"	1/4"	3/8"	1/8"	1/4"	3/8"	1/2"	3/8"	1/2"
ISO4144	∅ D	8.0	11.5	11.5	15.0	15.0	15.0	20.5	20.5	20.5	20.5	26.0	26.0
	M	4.0	5.0	5.0		5.0	5.5			5.5	5.5	6.0	6.0

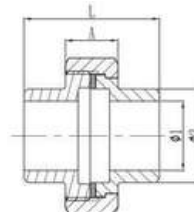
Standard	SIZE	1"	1 1/4"		1 1/2"			2"				2 1/2"	
		3/4"	1/2"	3/4"	1"	3/4"	1"	1 1/4"	1"	1 1/4"	1 1/2"	1"	1 1/4"
ISO4144	∅ D	26.0	34.5	34.5	34.5	40.0	40.0	40.0	51.0	51.0	51.0	65.5	65.5
	M	5.8		8.0	6.5		8.0	6.5	9.0	8.0	9.0		

# FITTINGS



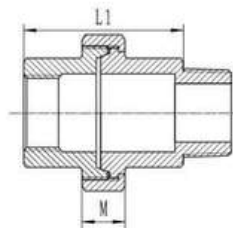
### FULL COUPLING

Standard	SIZE	1/8"	1/4"	3/8"	1/2"	3/4"	1"	1 1/4"	1 1/2"	2"	2 1/2"	3"	4"
ISO4144	A	17.0	24.0	25.0	32.0	35.0	41.0	45.0	45.0	54.0	63.0	69.0	81.0
	Ø B	13.0	16.5	20.0	24.5	30.0	37.5	46.5	53.0	65.5	82.0	95.5	121.5



### UNION BW

Standard	SIZE	1/8"	1/4"	3/8"	1/2"	3/4"	1"	1 1/4"	1 1/2"	2"	2 1/2"	3"	4"
ISO4144	A	13.0	13.5	15.5	16.5	18.0	19.0	22.0	24.0	26.0	24.0	26.0	33.2
	L	26.0	35.5	39.5	44.5	46.0	51.0	54.0	57.0	76.0	65.0	79.0	93.5
	Ø 1	6.2	8.8	12.5	16.0	21.6	27.2	35.9	41.8	53.0	68.8	80.8	105.3
	Ø 2	10.2	13.5	17.2	21.3	26.9	33.7	42.4	48.3	60.3	76.1	88.9	114.3



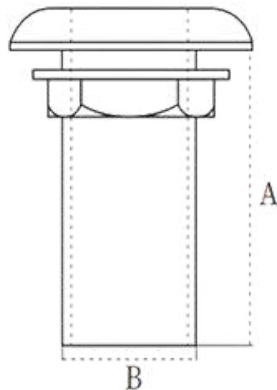
### UNION M/F

Standard	SIZE	1/8"	1/4"	3/8"	1/2"	3/4"	1"	1 1/4"	1 1/2"	2"	2 1/2"	3"	4"
ISO4144	A	13.5	17.0	20.5	24.5	31.0	38.0	47.0	53.0	66.0	82.0	95.5	121.5
	B	25.0	30.5	34.0	37.0	46.0	52.0	65.0	70.0	86.0	105.0	118.0	144.0
	L1	35.0	44.0	47.5	54.0	58.0	68.0	74.5	78.5	90.0	96.0	108.0	120.0
	M	13.0	13.5	15.5	16.5	18.0	19.0	22.0	24.0	26.0	30.0	31.0	34.0



# THRU HULL

Made of marine grade 316 stainless steel for maximum resistance and durability in a saline environment.



B (mm)	A (mm)	Size
21	59	1/2 inch
26	68	3/4 inch
33,5	74,5	1 inch
42	78,5	1-1/4 inch
48	79,5	1-1/2 inch
60	95	2 inch





# CATALOG

YEAR 2025

Production Adress

Dilovası OSB Mahallesi D-2022 Sk. No:17A Dilovası-Kocaeli / Türkiye

[www.incast.com.tr](http://www.incast.com.tr)

[sales@incast.com.tr](mailto:sales@incast.com.tr)

+902625037803